



**C**entral Amherst Little League (CALL), founded in 1955, is home to six levels of Little League baseball, ages 5 to 13, a women’s softball league and the Challenger Division , a community wide program that welcomes children and adults with disabilities to enjoy baseball. The fields are also used for elementary school, travel teams games and are open to the public for baseball as a Town of Amherst park.

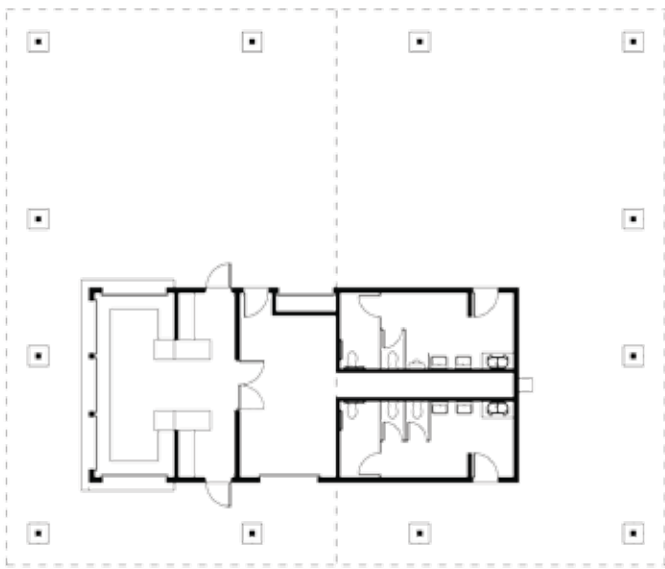
CALL is located adjacent to the I-290 (Youngman Expressway) in Amherst at the “Blue Water Tower”, The complex is highly visible from the elevated highway, where approximately 100,000 vehicles pass per day.

CALL is beginning an ambitious effort to improve ballpark conditions at our Werhle Drive Fields, including

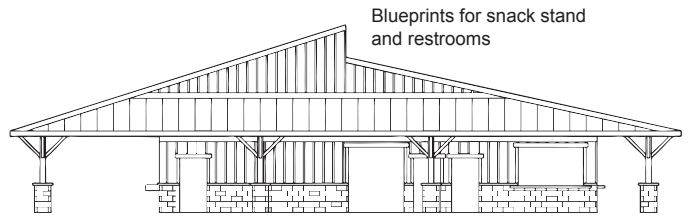
**RESTROOM CONSTRUCTION**  
**FIELD DRAINAGE**  
**EXPANDED PARKING**  
**DISABLED PARKING**  
**FENCING & FIELD NETTING REPAIR**

**IMPROVED BATTING CAGES**  
**ACCESSIBLE PATHWAYS TO ALL DIAMONDS**  
**BALL FIELD LIGHTING**  
**DUGOUT UPGRADES**  
**SNACK STAND IMPROVEMENTS**

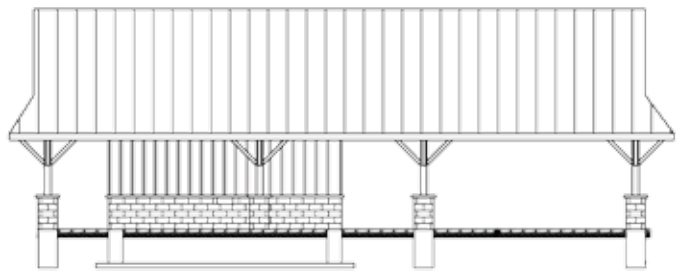
CALL currently relies on portable wash stations and restrooms to serve over 500 families that participate in baseball activities. These improvements are the first phase of a project to modernize CALL facilities to current recreational baseball standards.



**FLOOR PLAN**



**NORTHEAST ELEVATION**



**SOUTHEAST ELEVATION**



**WE NEED YOUR HELP!**

Central Amherst Little League needs to raise \$300,000 to begin these improvements. The Town of Amherst and New York State, through the offices of former Sen. Mary Lou Rath, have already appropriated over \$150,000.00 CALL needs your support to complete this project. **Be a hitter and sponsor CALL!**

**SPONSORSHIP LEVELS**

**SINGLE**

Commemorative Brick, Website display, 1/4 page program advertisement = \$250.00

**DOUBLE**

Commemorative Brick, Website display, 1/2 page program advertisement, outfield sign (+ \$175 set up fee) = \$500.00

**TRIPLE**

Commemorative Brick, Website display, 1/2 page program advertisement, outfield sign (+ \$175 set up fee)& Team sponsor = \$ 800.00

**HOME RUN**

Commemorative Paver, Website display, Full page program advertisement, outfield sign (+ \$175 set up fee) & team sponsor = \$ 1125.00

**NAMING RIGHTS AND OTHER LONG-TERM COMMITMENTS ARE ALSO AVAILABLE**